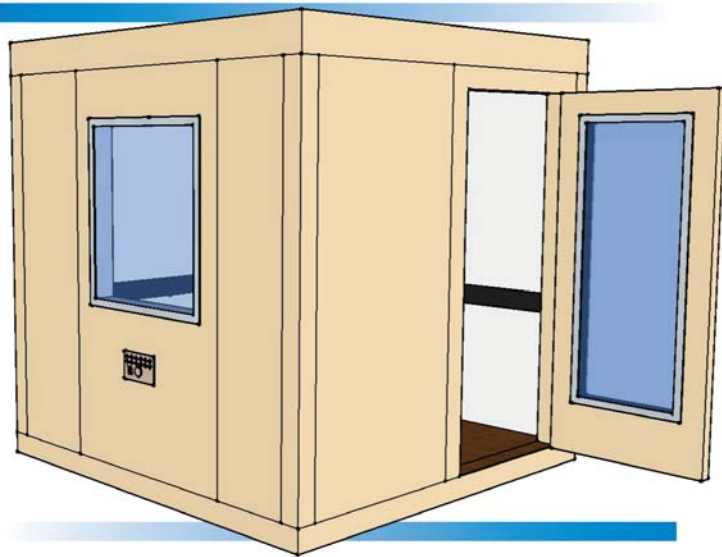


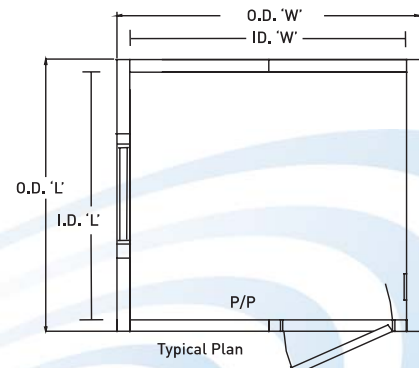
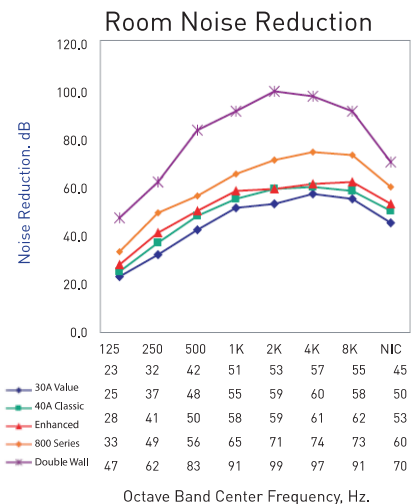
IAC ACOUSTICS 30A AUDIOMETRIC ROOMS

30a VALUE SERIES



The 30a Value Series offers performance and aesthetics at an entry level budget. These light weight, cost savers are designed to provide proven performance in an office setting in accordance with ASTM 3.1. The 30a Series Single Wall (individual room) construction is a single or multiple occupancy room constructed of four inch thick modular panels, complete with carpeted vibration isolated floor, space-saver roof mounted ventilation, recessed electrical, Noise-Lock® doors and double glazed windows, audiometric jack panels acoustically matched and shipped ready for field assembly.

Model No.	Inside Dimension ft-in x ft-in x ft-in			Outside Dimension ft-in x ft-in x ft-in					Weight Lbs (kg)
	L	x	W x D	L	x	W x H	x		
30a-1	2-10	x	3-6 x 6-6	3-6	x	4-2 x 7-7	892		
30a-2	3-6	x	4-4 x 6-6	4-2	x	5-0 x 7-7	1170		
30a2.5	3-6	x	6-2 x 6-6	4-2	x	6-10 x 7-7	1478		
30a-3	3-6	x	6-8 x 6-6	4-2	x	7-4 x 7-7	1569		
30a-4	4-8	x	7-0 x 6-6	5-4	x	7-8 x 7-7	1987		
30a-5	6-2	x	6-2 x 6-6	6-10	x	6-10 x 7-7	2159		
30a5.5	6-4	x	7-6 x 6-6	7-0	x	8-2 x 7-7	2534		
30a-6	7-0	x	7-0 x 6-6	7-8	x	7-8 x 7-7	2562		
30a-7	7-0	x	7-6 x 6-6	7-8	x	8-2 x 7-7	2706		
30a-7.5	6-4	x	8-4 x 6-6	7-0	x	9-0 x 7-7	2727		
30a-8	7-0	x	8-8 x 6-6	7-8	x	9-4 x 7-7	3006		
30a-9	7-0	x	9-10 x 6-6	7-8	x	10-6 x 7-7	3293		
30a-10	8-2	x	8-8 x 6-6	8-10	x	9-4 x 7-7	3346		
30a-11	8-6	x	8-6 x 6-6	9-2	x	9-2 x 7-7	3389		
30a-12	8-2	x	9-10 x 6-6	8-10	x	10-6 x 7-7	3660		
30a-13	9-4	x	9-10 x 6-6	10-0	x	10-6 x 7-7	4074		
30a13.5	8-8	x	11-2 x 6-6	9-4	x	11-10 x 7-7	4202		
30a-14	10-6	x	9-10 x 6-6	11-2	x	10-6 x 7-7	4436		



IAC ACOUSTICS 30A AUDIOMETRIC ROOMS

30a VALUE SERIES General Notes

TOTAL ESTIMATED DESIGN WEIGHT: () lbs.

PANEL CONSTRUCTION: Noiselock V (walls) and Noiselock VI (ceiling)

INTERIOR SURFACES : 22ga. galvanized perforated steel

EXTERIOR SURFACES: 14ga. Cold rolled solid steel

FLOOR INTERIOR SURFACE: 11ga. hot rolled steel

FINISH: Powder coated

COLOR: Choice of (12) standards

FLOOR COVERING: Industrial nylon carpet

Color: (to match paint color selection) 3/8" thick underlayment and 2 1/2" H black cove base molding included.

DOOR: (1) 2' x 9" wide x 6' - 1 1/2" high clear opening cam-lift splitframe with push plate and pull handles.

Note: dimensions locating door are shown to the clear opening

WINDOW: (1) 2'6" wide x 2'10" high aluminum frame double glazed with 1/4" thick laminated safety glass (width reduced on smaller models).

Vibration isolator rails to be provided below floor panels.

2" Minimum clearance is required between the exterior of testing booth and host facility walls/ceiling.

LARGEST PANEL SIZE: () wide x () long x () thick. Customer to ensure adequate site access.

VENTILATION: () cfm system comprised of integrated spasaver. Exhaust/inlet air ceiling silencer panels and 120V, 60Hz, 14w fans.

ELECTRICAL:

- 120V recessed incandescent light fixture
- 120V toggle switch for fans and lights
- 120V duplex receptacle

Audiometric jack panel comprised of:

- (12) Switchcraft three-wire phone-type jacks
- (2) USB ports
- (1) 2-Inch ID passthrough hole with cover

(Lot) boxes, connectors, etc. As required for complete installation.

Note:

- Customer to provide 110V, 60Hz, 20 amp power to roof mounted quad receptacle power cord.
- All electrical is wired per 2002 national electric code
- Booth is factory UL certified and labeled

Customer to provide a finished floor which is within +/- 1/4" of level in 10 non-cumulative ft.



Bronx, New York

T: 718 931 8000

F: 718 863 1138

E: newyork@iac-acoustics.com